

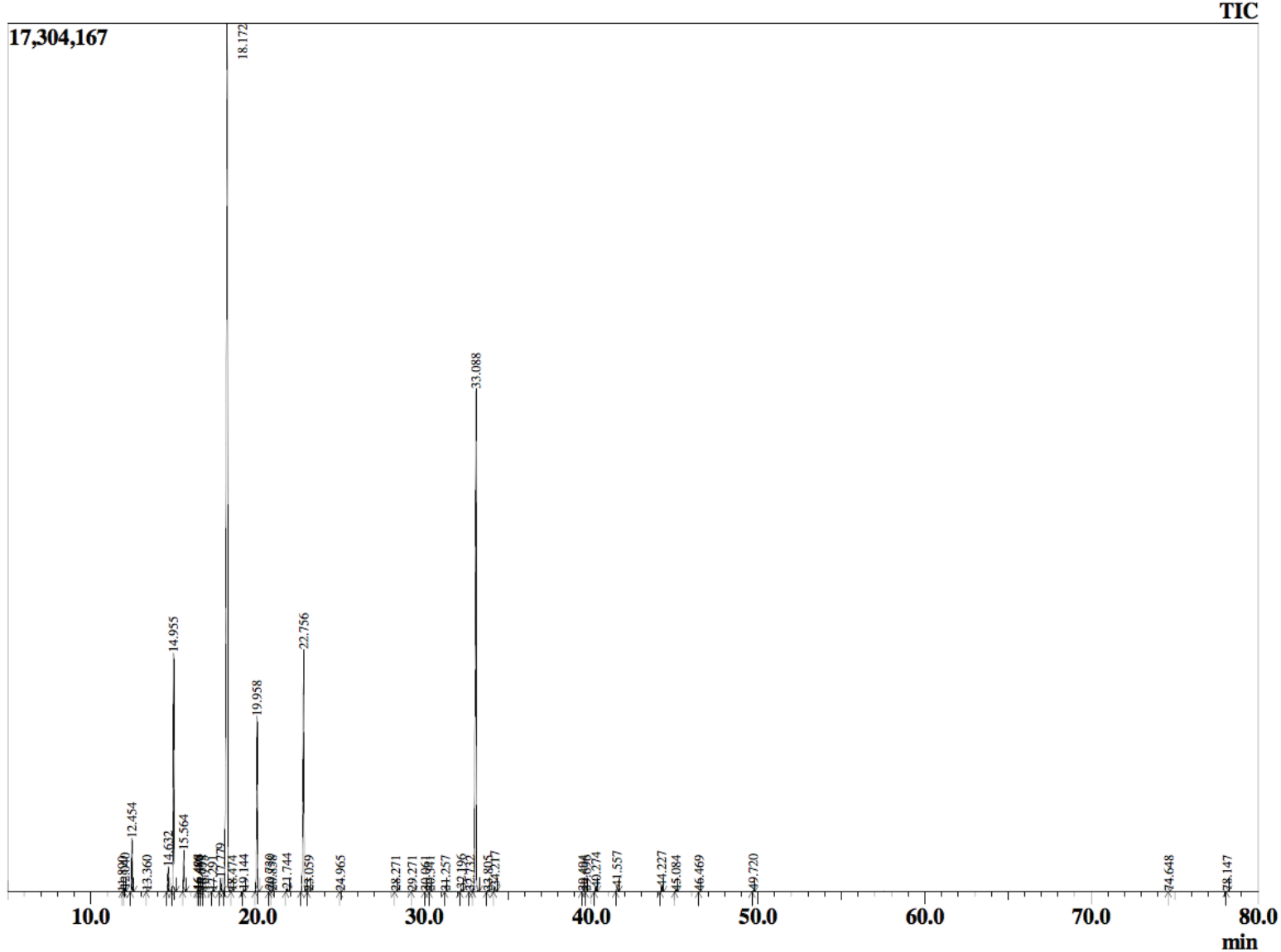
Rua 9, quadra 10 - Lote 01
Setor Planalto - Alto Paraíso de Goiás
(62) 3446-2162 - atendimento@terra-flor.com



Este documento é uma cópia fiel do fornecedor.

Óleo essencial: Bergamota - *Citrus bergamia*
Lote fornecedor: A0609B
Lote Terra Flor: 167

Chromatogram CitBer1



Este documento é uma cópia fiel do fornecedor.

Peak Report TIC		
R.Time	Name	Area%
11.890	Tricyclene	0.00
12.040	alpha-Thujene	0.08
12.454	alpha-Pinene	1.55
13.360	Camphene	0.03
14.632	Sabinene	0.80
14.955	beta-Pinene	7.53
15.564	Myrcene	1.32
16.408	Octanal	0.06
16.480	Pseudolimonene	0.03
16.632	alpha-Phellandrene	0.02
16.775	delta-3-Carene	0.03
17.291	alpha-Terpinene	0.04
17.779	para-Cymene	0.51
18.172	Limonene	45.15
18.474	cis-beta-Ocimene	0.02
19.144	trans-beta-Ocimene	0.07
19.958	gamma-Terpinene	6.35
20.730	trans-Sabinene hydrate + cis-Linalool oxide (1	0.06
20.858	Pinol	0.01
21.744	Terpinolene	0.12
22.756	Linalool	10.50
23.059	Nonanal	0.02
24.965	cis-Limonene oxide	0.01
28.271	Terpinen-4-ol	0.02
29.271	alpha-Terpineol	0.04
30.061	Decanal	0.01
30.341	Octyl acetate	0.03
31.257	Nerol	0.02
32.196	Neral	0.10
32.732	Unidentified	0.01
33.088	Linalyl acetate	24.40
33.805	Unidentified	0.05
34.217	Geranial	0.21
39.494	alpha-Terpinyol acetate	0.02
39.696	Citronellyl acetate	0.01
40.274	Neryl acetate	0.19
41.557	Geranyl acetate	0.21
44.227	beta-Caryophyllene	0.24
45.084	trans-alpha-Bergamotene	0.06
46.469	alpha-Humulene	0.01
49.720	beta-Bisabolene	0.07
74.648	Citropten	0.01
78.147	Isobergaptene	0.02
		100.00