

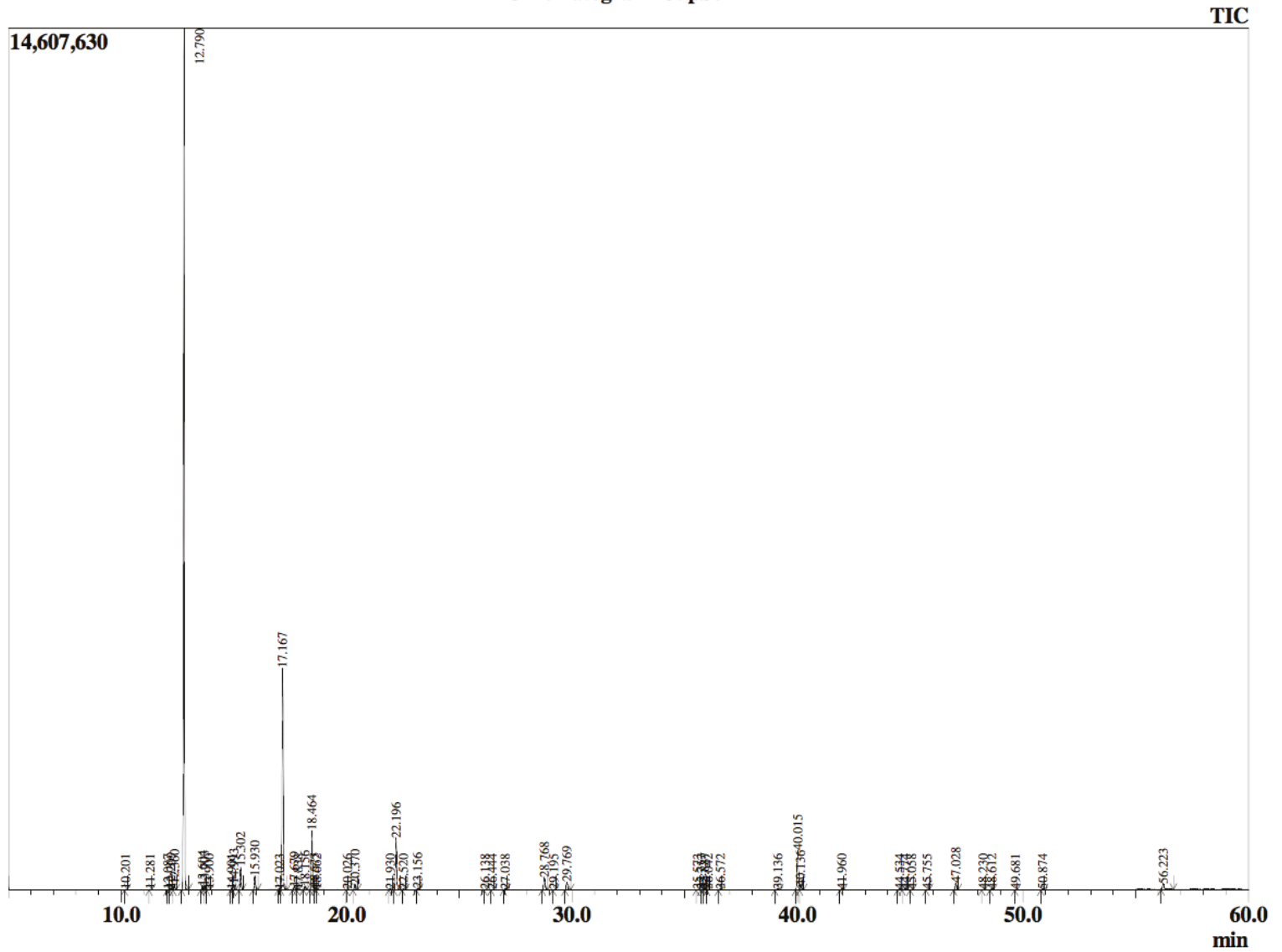
Rua 9, quadra 10 - Lote 01  
Setor Planalto - Alto Paraíso de Goiás  
(62) 3446-2162 - atendimento@terra-flor.com



Este documento é uma cópia fiel do fornecedor.

Óleo essencial: CYPRESS  
Lote fornecedor: A1120P  
Lote Terra Flor: 134

### Chromatogram CupSem2



Este documento é uma cópia fiel do fornecedor.

Peak Report TIC		
R.Time	Name	Area%
10.201	Santene	0.02
11.281	Unidentified	0.03
12.087	Hashishene	0.02
12.209	Tricylcene	0.11
12.360	alpha-Thujene	0.38
12.790	alpha-Pinene	58.95
13.604	alpha-Fenchene	0.30
13.703	Camphene	0.29
13.900	Thuja-2,4(10)diene	0.02
14.901	Unidentified	0.05
14.993	Sabinene	0.43
15.302	beta-Pinene	1.71
15.930	Myrcene	1.06
17.023	alpha-Phellandrene	0.04
17.167	delta-3-Carene	17.17
17.679	alpha-Terpinene	0.23
17.838	ortho-Cymene	0.03
18.156	para-Cymene	0.27
18.464	Limonene	4.74
18.573	beta-Phellandrene	0.16
18.662	1,8-Cineole	0.03
20.026	Unidentified	0.01
20.370	gamma-Terpinene	0.45
21.930	Terpinolene isomer	0.06
22.196	Terpinolene	4.37
22.520	para-Cymenene	0.06
23.156	Linalool	0.11
26.138	Unidentified	0.03
26.444	Camphor	0.02
27.038	Karahanaenone	0.10
28.768	Terpinen-4-ol	1.24
29.195	para-Cymen-8-ol	0.02
29.769	alpha-Terpineol	0.75
35.573	Unidentified	0.04
35.757	Unidentified	0.02
35.887	Bornyl acetate	0.16
36.042	Unidentified	0.01
36.572	Isobornyl acetate	0.07
39.136	Ocimenyl acetate	0.12
40.015	alpha-Terpinyl acetate	3.83
40.136	gamma-Terpinyl acetate	0.41
41.960	alpha-Copaene	0.08
44.534	alpha-Cedrene	0.13
44.774	trans-beta-Caryophyllene	0.12
45.058	beta-Cedrene	0.03
45.755	cis-Thujopsene	0.05
47.028	alpha-Humulene	0.71
48.230	trans-Cadina-1(6),4-diene	0.04
48.612	Germacrene D	0.10
49.681	alpha-Murolene	0.02
50.874	delta-Cadinene	0.08
56.223	Cedrol	0.70
		100.00