

Rua 9, quadra 10 - Lote 01  
Setor Planalto - Alto Paraíso de Goiás  
(62) 3446-2162 - atendimento@terra-flor.com



Este documento é uma cópia fiel do fornecedor.

Óleo essencial: Lavanda Kashmir - *Lavandula angustifolia*  
Lote fornecedor: LAV-KOSBI1017  
Lote Terra Flor: 141

### **Analysis Conditions:**

**MS 5970 Column:** HP-5MS 5% Phenyl Methyl Silos: 30 m x 250 µm x 0.25 µm

#### **Oven Program**

50 °C for 4 min → 3 °C/min to 230 °C for 4min → 10 °C/min to 280 °C for 7min

**Carrier gas:** He: 12.348 psi / MS

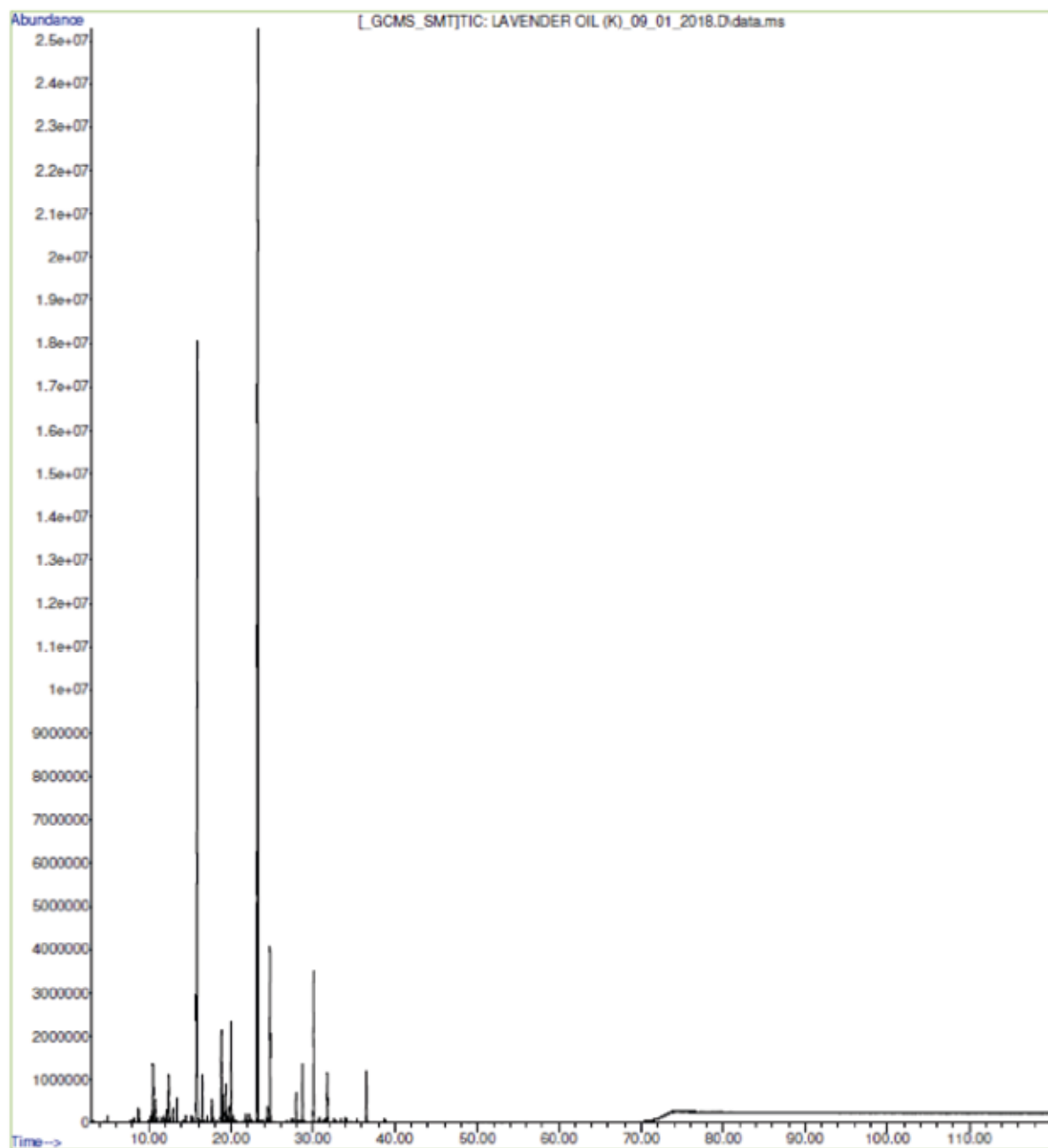
**Sample injection / split:** 1 µl of 5% solution in Acetone

**Mass range:** 35 to 450

Este documento é uma cópia fiel do fornecedor.

## MASS SPECTRA OF LAVENDER OIL (K)

File :D:\MassHunter\GCMS\1\data\2018\L\LAVENDER OIL (K)\_09\_01\_2018  
... .D  
Operator : ERAM SHAIKH  
Instrument : GCMS  
Acquired : 09 Jan 2018 11:53 using AcqMethod ANALYSIS METHOD.M  
Sample Name:  
Misc Info :



Este documento é uma cópia fiel do fornecedor.

### **IDENTIFICATION RESULT: LAVENDER OIL (K)**

<b>PK</b>	<b>RT</b>	<b>Compound Name</b>	<b>Area Pct</b>	<b>CAS</b>	<b>Qual</b>
1	5.0284	<u>Diacetone alcohol</u>	0.1077	000123-42-2	83
2	5.8968	<u>Hexanol &lt;n-&gt;</u>	0.0193	000111-27-3	89
3	7.7421	<u>Tricyclene</u>	0.0301	000508-32-7	97
4	7.9843	<u>Thujene &lt;alpha-&gt;</u>	0.0271	002867-05-2	91
5	8.2237	<u>Pinene &lt;alpha-&gt;</u>	0.0941	000080-56-8	97
6	8.7987	<u>Camphene</u>	0.2693	000079-92-5	98
7	9.8987	<u>Sabinene</u>	0.0286	003387-41-5	97
8	9.99	<u>Pinene &lt;beta-&gt;</u>	0.0419	000127-91-3	95
9	10.2315	<u>Vinyl amyl carbinol</u>	0.1189	003391-86-4	86
<b>10</b>	<b>10.5374</b>	<b><u>Octan-3-one</u></b>	<b>1.1129</b>	<b>000106-68-3</b>	<b>90</b>
11	10.7549	<u>Myrcene</u>	0.4292	000123-35-3	88
12	10.9548	<u>Hexanol &lt;ethyl-&gt;</u>	0.1404	000589-98-0	90
13	11.5114	<u>Terpinene &lt;gamma-&gt;</u>	0.1076	000099-85-4	91
14	11.824	<u>Hexyl acetate</u>	0.1381	000142-92-7	90
15	12.0777	<u>Cymene &lt;meta-&gt;</u>	0.0649	000535-77-3	91
16	12.1802	<u>Cymene &lt;para-&gt;</u>	0.2535	000099-87-6	95
17	12.3685	<u>Limonene</u>	0.6111	004889-83-2	88
18	12.4512	<u>Eucalyptol</u>	0.9893	000470-82-6	89
19	12.9235	<u>Ocimene &lt;(Z)-, beta-&gt;</u>	0.2725	003338-55-4	87
20	13.3921	<u>Ocimene &lt;(E)-, beta-&gt;</u>	0.4622	003779-61-1	98
21	14.4556	<u>Linalool oxide &lt;cis-&gt;</u>	0.1604	005989-33-3	91
22	15.2057	<u>Linalool oxide &lt;trans-&gt;</u>	0.1507	034995-77-2	91
23	15.6919	<u>Cymene-7-ol &lt;ortho-&gt;</u>	0.0329	021190-34-1	90
<b>24</b>	<b>15.9211</b>	<b><u>Linalool</u></b>	<b>29.3189</b>	<b>000078-70-6</b>	<b>94</b>
25	16.0448	<u>Isobornyl n-butanoate</u>	0.0912	107910-89-4	87
26	16.1986	<u>Propionate &lt;hexyl-&gt;</u>	0.0521	002445-76-3	89
27	16.5009	<u>Octene &lt;3-acetoxy-&gt;</u>	0.973	002442-10-6	90
28	16.7328	<u>Menth-2-en-1-ol &lt;cis-, para-&gt;</u>	0.0831	029803-82-5	87
29	17.0669	<u>Acetate &lt;3-octyl-&gt;</u>	0.1294	004864-61-3	89
30	17.5728	<u>Ocimene &lt;neo-allo-&gt;</u>	0.0287	003016-19-1	98
31	17.7113	<u>Camphor</u>	0.5152	000076-22-2	96
32	18.2044	<u>Isobutvrate &lt;heptyl-&gt;</u>	0.0343	002349-13-5	88
<b>33</b>	<b>18.7614</b>	<b><u>Borneol</u></b>	<b>2.0076</b>	<b>000507-70-0</b>	<b>90</b>
34	18.9784	<u>Lavandulol</u>	0.5914	058461-27-1	90
35	19.337	<u>Terpinen-4-ol</u>	0.8684	000562-74-3	89
36	19.6161	<u>Cymen-8-ol</u>	0.0749	00197-01-9	87
37	19.7087	<u>Cryptone</u>	0.4035	000500-02-7	88
<b>38</b>	<b>19.9829</b>	<b><u>Terpineol &lt;alpha-&gt;</u></b>	<b>2.1845</b>	<b>000098-55-5</b>	<b>93</b>

Este documento é uma cópia fiel do fornecedor.

39	20.2367	<u>Isobutyrate &lt;hexyl-&gt;</u>	0.1709	002349-07-7	90
40	21.6756	<u>Isobornyl acetate</u>	0.0651	000125-12-2	90
41	21.808	<u>Nerol</u>	0.208	000106-25-2	89
42	22.1992	<u>Cuminaldehyde</u>	0.1975	000122-03-2	97
43	22.4099	<u>Carvone</u>	0.0661	000099-49-0	95
44	22.8695	<u>Piperitone</u>	0.0289	000089-81-6	89
45	<b>23.2499</b>	<b><u>Linalyl acetate</u></b>	<b>43.7349</b>	<b>000115-95-7</b>	<b>91</b>
46	23.7321	<u>Dihydrocarveol acetate &lt;iso-&gt;</u>	0.0448	160868-58-6	88
47	24.3767	<u>Bornyl acetate</u>	0.3576	092618-89-8	98
48	24.5575	<u>Cymen-7-ol &lt;ortho-&gt;</u>	0.0433	021190-34-1	98
49	<b>24.7432</b>	<b><u>Lavandulyl acetate</u></b>	<b>3.5958</b>	<b>025905-14-0</b>	<b>95</b>
50	26.8256	<u>Dihydrocarveol acetate &lt;iso-&gt;</u>	0.0395	160868-58-6	87
51	27.9112	<u>cis-Geranyl acetate</u>	0.6227	000141-12-8	91
52	28.2527	<u>Borbonene &lt;beta-&gt;</u>	0.0339	119903-95-6	88
53	<b>28.7386</b>	<b><u>trans-Geranyl Acetate</u></b>	<b>1.2372</b>	<b>000105-87-3</b>	<b>94</b>
54	28.9551	<u>Bergamotene &lt;alpha-, cis-&gt;</u>	0.0357	018252-46-5	93
55	<b>30.0604</b>	<b><u>Caryophyllene &lt;(E)-&gt;</u></b>	<b>3.4756</b>	<b>013877-93-5</b>	<b>99</b>
56	30.817	<u>Bergamotene &lt;alpha-, cis-&gt;</u>	0.1114	018252-46-5	98
57	31.2697	<u>Santalene &lt;epi-, beta-&gt;</u>	0.0205	025532-78-9	90
58	31.4497	<u>Humulene &lt;alpha-&gt;</u>	0.0859	006753-98-6	99
59	<b>31.7535</b>	<b><u>Farnesene &lt;(E)-, beta-&gt;</u></b>	<b>1.0632</b>	<b>018794-84-8</b>	<b>96</b>
60	32.7888	<u>Bergamotene &lt;beta-, trans-&gt;</u>	0.0482	015438-94-5	96
61	33.9298	<u>Cadinene &lt;gamma-&gt;</u>	0.1199	038357-83-4	98
62	<b>36.5413</b>	<b><u>Caryophyllene oxide</u></b>	<b>1.2773</b>	<b>001139-30-6</b>	<b>91</b>
63	38.7512	<u>Cadina-3,5-diene</u>	0.0924	267665-20-3	89
		<b>Total</b>	<b>99.7952</b>		