

Rua 9, quadra 10 - Lote 01  
Setor Planalto - Alto Paraíso de Goiás  
(62) 3446-2162 - atendimento@terra-flor.com



**terraflor**  
AROMATERAPIA

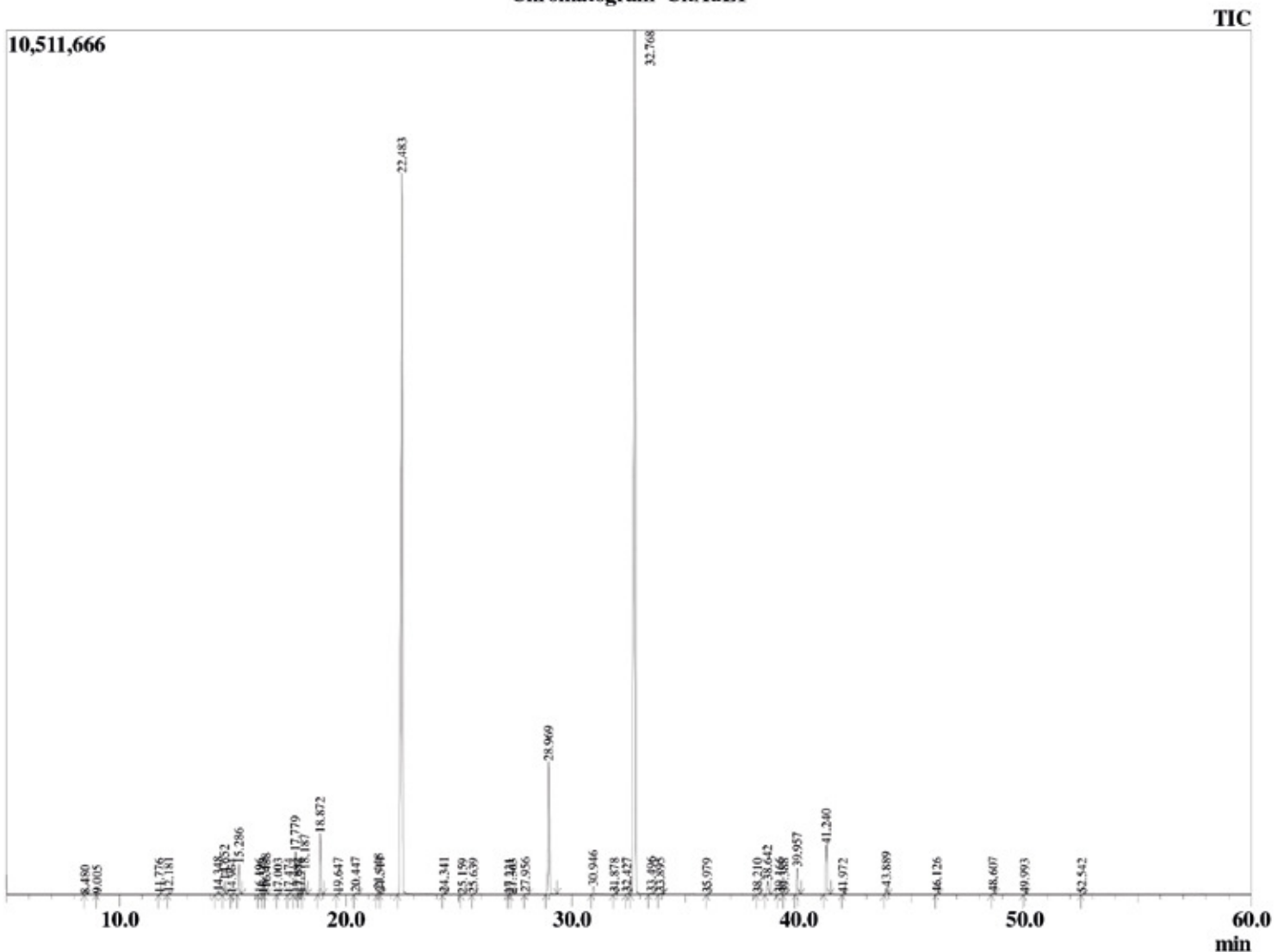
Este documento é uma cópia fiel do fornecedor.

Óleo essencial: Petitgrain - *Citrus aurantium*  
Lote fornecedor: EOC0305T  
Lote Terra Flor: 19138

### Sample Information

Sample Type : Essential Oil  
Sample Name : CitAuL1  
Injection Volume : 0.10  
Lot Number : EOC0305T  
Instrument ID : GC-3

### Chromatogram CitAuL1



Rua 9, quadra 10 - Lote 01  
Setor Planalto - Alto Paraíso de Goiás  
(62) 3446-2162 - atendimento@terra-flor.com



**terraflor**  
AROMATERAPIA

Este documento é uma cópia fiel do fornecedor.

Peak Report TIC

R.Time	Name	Area%
8.480	Hex-3(E)-enol	0.01
9.005	n-Hexanol	0.01
11.776	alpha-Thujene	0.01
12.181	alpha-Pinene	0.06
14.348	Sabinene	0.09
14.652	beta-Pinene	0.47
14.964	6-Methyl hept-5-en-2-one	0.02
15.286	Myrcene	1.03
16.196	Pseudolimonene	0.04
16.343	alpha-Phellandrene	0.02
16.488	delta-3-Carene	0.20
17.003	alpha-Terpinene	0.02
17.474	para-Cymene	0.02
17.779	Limonene	1.58
17.882	beta-Phellandrene	0.00
17.976	1,8-Cineole	0.03
18.187	cis-beta-Ocimene	0.87
18.872	trans-beta-Ocimene	2.22
19.647	gamma-Terpinene	0.05
20.447	cis-Linalool oxide (furanoid)	0.08
21.448	Terpinolene	0.21
21.511	trans-Linalool oxide (furanoid)	0.07
22.483	Linalool	37.41
24.341	allo-Ocimene	0.05
25.159	neo-allo-Ocimene	0.01
25.639	Camphor	0.01
27.231	delta-Terpineol	0.01
27.363	Borneol	0.01
27.956	Terpinen-4-ol	0.05
28.969	alpha-Terpineol	5.53
30.946	Nerol	0.37
31.878	Neral	0.03
32.427	Unidentified	0.05
32.768	Linalyl acetate	44.86
33.496	Unidentified	0.07
33.895	Geranial	0.06
35.979	Geranyl formate	0.01
38.210	Unidentified	0.02
38.642	Methyl anthranilate	0.57
39.166	alpha-Terpinyl acetate	0.06
39.388	Citronellyl acetate	0.01
39.957	Neryl acetate	1.15
41.240	Geranyl acetate	2.14
41.972	beta-Elemene	0.01
43.889	beta-Caryophyllene	0.32
46.126	alpha-Humulene	0.03
48.607	Bicyclogermacrene	0.08
49.993	delta-Cadinene	0.01
52.542	trans-Nerolidol	0.01
		100.00