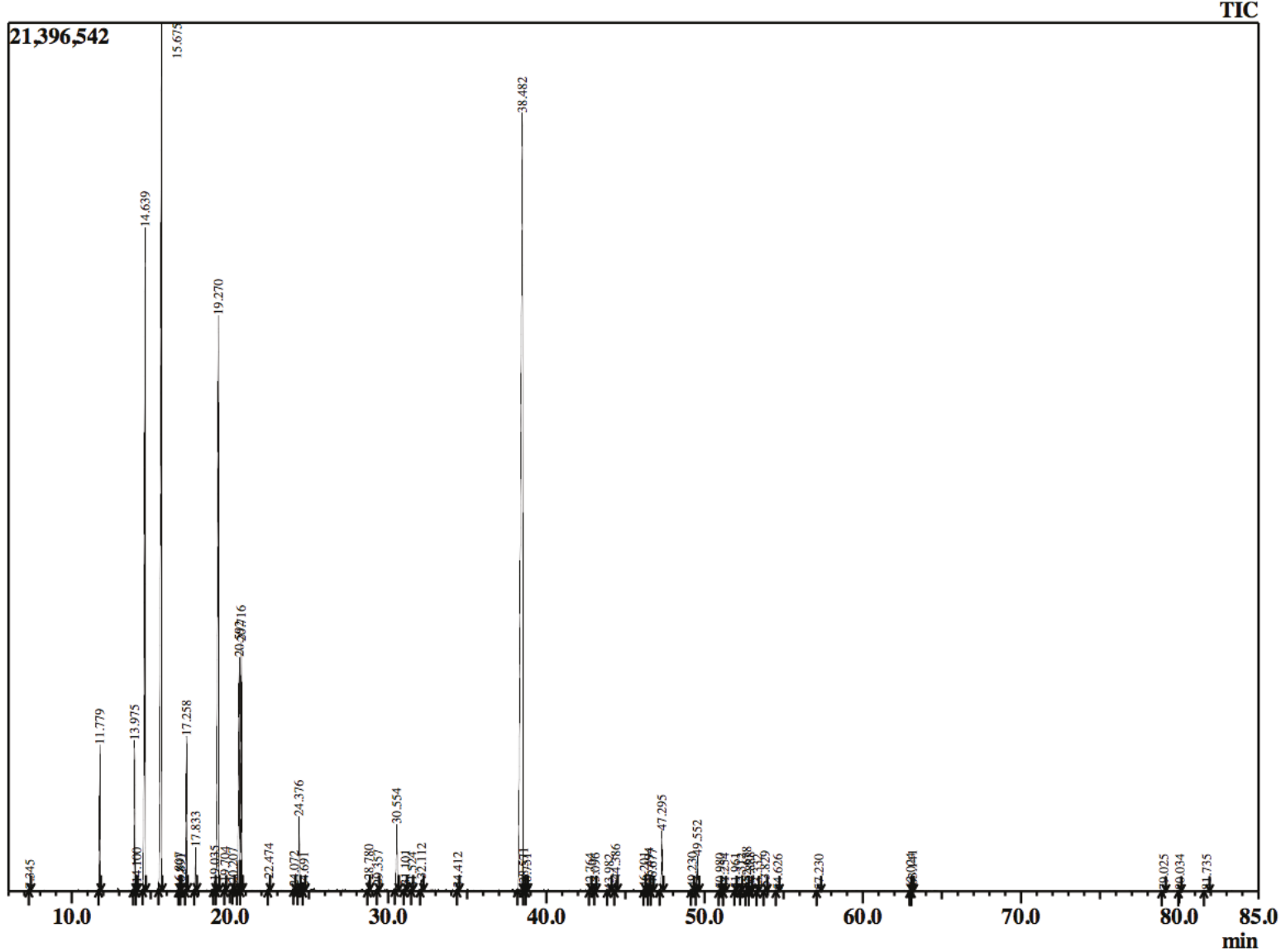


Este documento é uma cópia fiel do fornecedor.

Óleos essenciais: Pinho da Sibéria - *Abies sibirica*
Lote fornecedor: P170116GR
Lote Terra Flor: 142

Chromatogram AbiSib1 Lot P170116GR



Este documento é uma cópia fiel do fornecedor.

Peak Report TIC		
R.Time	Name	Area%
7.345	Toluene	0.01
11.779	Santene	1.78
13.975	Tricyclene	2.08
14.100	Thujene <alpha>	0.10
14.639	Pinene <alpha>	12.91
15.675	Camphene	20.55
16.807	Cymene <para>	0.04
16.891	Sabinene	0.02
17.258	Pinene <beta>	2.35
17.833	Myrcene	0.63
19.035	Phellandrene <alpha>	0.20
19.270	3-Carene	13.01
19.704	Terpinene <alpha>	0.12
20.207	Cymene <para>	0.11
20.592	Limonene	5.27
20.716	Phellandrene <beta>	3.89
22.474	Terpinene <gamma>	0.18
24.072	m-Mentha-3(8),6-diene	0.05
24.376	Terpinolene	1.25
24.691	Dehydro-p-cymene	0.05
28.780	Camphor	0.18
29.357	Terpineol <trans-beta>	0.08
30.554	Borneol	1.25
31.101	Terpinen-4-ol	0.11
31.524	Cryptone	0.04
32.112	Terpineol <alpha>	0.22
34.412	Methyl thymol ether	0.05
38.482	Bornyl acetate	30.08
38.571	Isobornyl acetate	0.11
38.751	2-Undecanone	0.03
42.764	Longipinene<alpha>	0.03
43.096	Neryl acetate	0.03
43.982	Copaene <alpha>	0.03
44.386	Geranyl acetate	0.19
46.201	Gurjunene <alpha>	0.05
46.494	Dodecanal	0.13
46.677	Longifolene	0.13
47.295	Caryophyllene <trans>	1.20
49.230	Himachalene <alpha>	0.06
49.552	Humulene <alpha>	0.65
50.980	Alloaromadendrene	0.05
51.254	Himachalene <gamma>	0.05
51.961	Alaskene <beta>	0.03
52.312	Himachalene isomer	0.02
52.678	Bisabolene <beta>	0.16
52.888	Himachalene <beta>	0.06
53.332	Cadinene <delta>	0.03
53.829	Bisabolene <E-gamma>	0.09
54.626	Bisabolene <alpha>	0.02
57.230	Caryophyllene oxide	0.03
63.024	Bisabolol <beta>	0.04
63.141	Bisabolol <alpha>	0.11
79.025	Manoyl oxide <13-epi>	0.03
80.034	Manoyl oxide isomer	0.02
81.735	Manool	0.02
		100.00