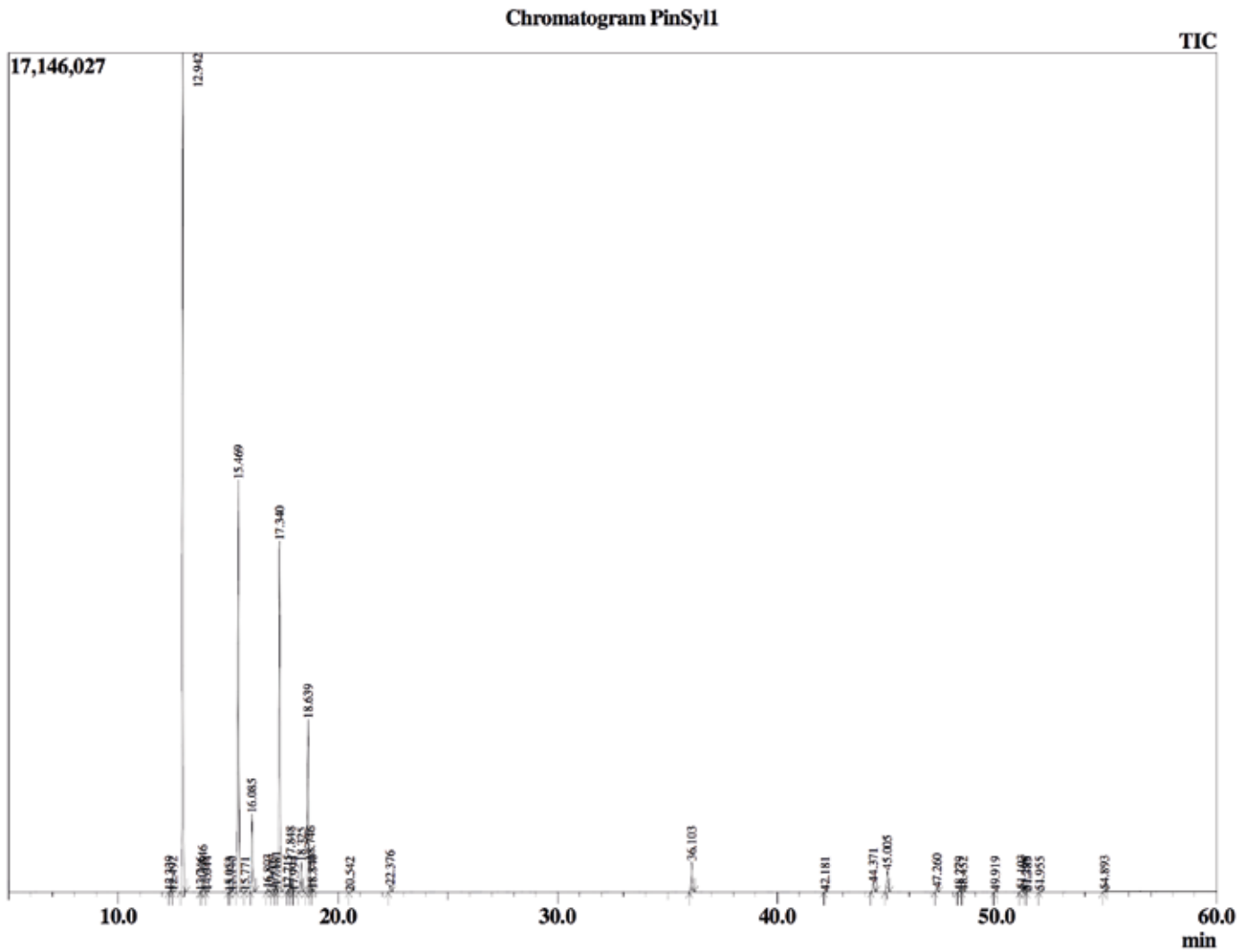


Rua 9, quadra 10 - Lote 01
Setor Planalto - Alto Paraíso de Goiás
(62) 3446-2162 - atendimento@terra-flor.com



Este documento é uma cópia fiel do fornecedor.

Óleos essenciais: Pinheiro silvestre - *Pinus sylvestris*
Lote fornecedor: A0804C
Lote Terra Flor: 147



Este documento é uma cópia fiel do fornecedor.

Peak Report TIC

R.Time	Name	Area%
12.339	Tricyclene	0.04
12.492	alpha-Thujene	0.02
12.942	alpha-Pinene	39.80
13.746	alpha-Fenchene	0.02
13.846	Camphene	0.54
14.044	Thuja-2,4(10)diene	0.05
15.053	Cymene isomer	0.01
15.140	Sabinene	0.03
15.469	beta-Pinene	19.62
15.771	Camphene isomer	0.02
16.085	Myrcene	3.60
16.803	Unidentified	0.14
17.027	Pseudolimonene	0.15
17.181	alpha-Phellandrene	0.30
17.340	delta-3-Carene	17.48
17.715	1,4-Cineole	0.12
17.848	alpha-Terpinene	1.48
17.994	ortho-Cymene	0.01
18.325	para-Cymene	1.51
18.639	Limonene	8.70
18.746	beta-Phellandrene	1.50
18.840	1,8-Cineole	0.09
20.542	gamma-Terpinene	0.01
22.376	Terpinolene	0.35
36.103	Bornyl acetate	1.82
42.181	alpha-Copaene	0.02
44.371	Junipene	0.61
45.005	beta-Caryophyllene	1.36
47.260	alpha-Humulene	0.23
48.279	10-beta-H-Cadina-1(6),4-diene	0.04
48.452	trans-Cadina-1(6),4-diene	0.03
49.919	alpha-Muurolene	0.03
51.103	delta-Cadinene	0.13
51.296	cis-Calamenene	0.03
51.385	Zonarene	0.02
51.955	trans-Cadine-1,4-diene	0.02
54.893	Caryophyllene oxide	0.10
		100.00